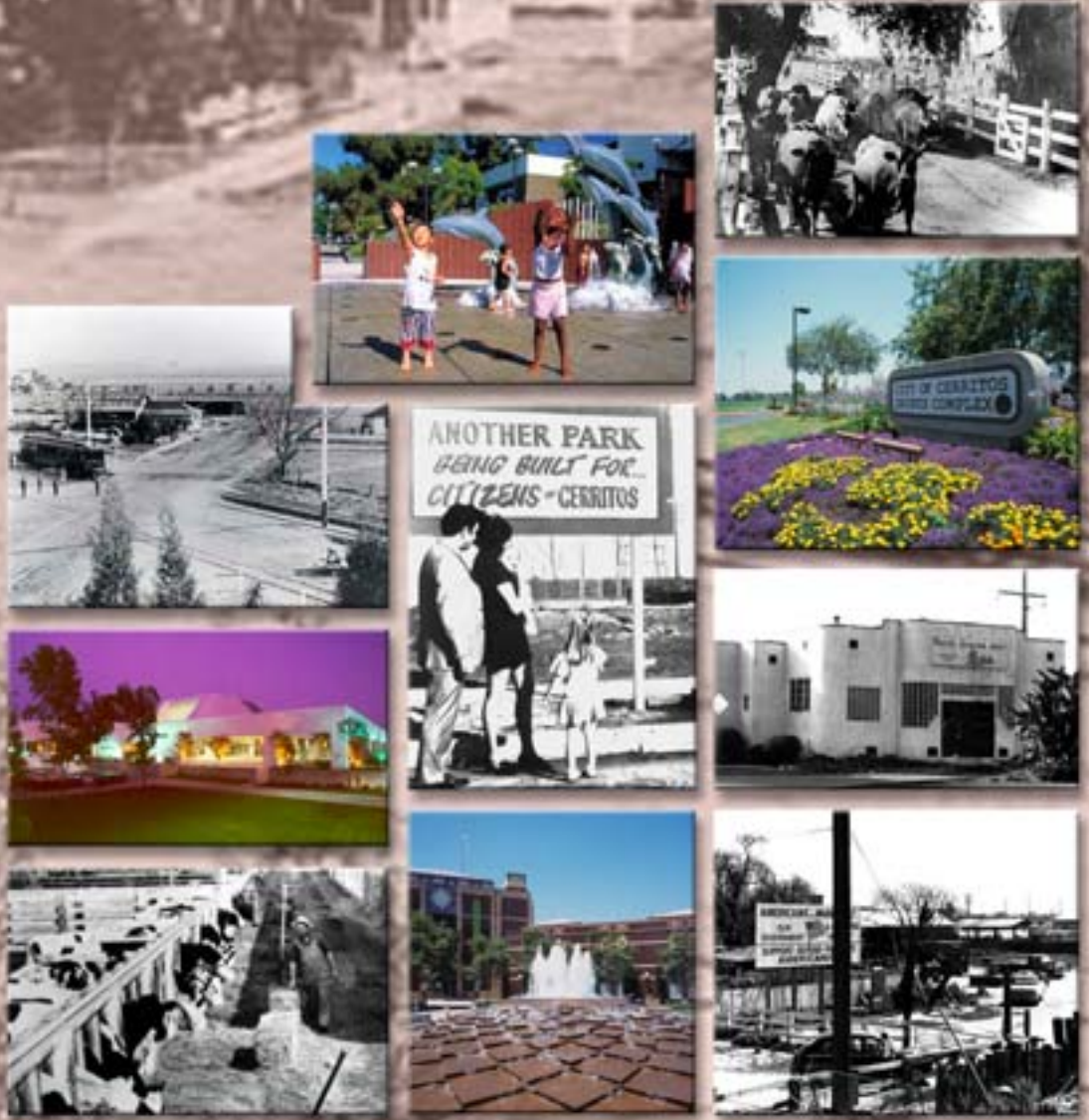


CITY OF CERRITOS GENERAL PLAN

Adopted January 2004



CITY OF CERRITOS FINAL GENERAL PLAN



LEAD AGENCY:

CITY OF CERRITOS

18125 Bloomfield Avenue
Cerritos, California 90703

*Contact: Mr. Torrey N. Contreras, ASLA
Advance Planning/Redevelopment Manager
562.860.0311*

PREPARED BY:

RBF CONSULTING

14725 Alton Parkway
Irvine, California 92618

*Contact: Ms. Collette Morse, AICP
949.472.3505*

Adopted January 6, 2004



City Council:

Gloria A. Kappe, Mayor
Robert Hughlett, Ed.D., Mayor Pro Tem
Paul W. Bowlen, Councilmember
John F. Crawley, Councilmember
Laura Lee, Councilmember

Planning Commission:

Waldo Arballo **Jesse Kung**
Mario Bautista **Howard Spitzer**
Carol Chen

Parks and Recreation Commission:

Charlie Chung **Jamie Herbon**
Jim Edwards **Larry Sagert**
Gail Grossman

Property Preservation Commission:

Robert Houska **Ray Lovell**
Doris Iglesias **Rick Renaker**
Chan-Yong Kim

Fine Arts and Historical Commission:

Kay K. Ikuta **Barry A. Rabbitt** **Anne G. Samson**
Ester Pulido **George Ray**

City Staff:

Art Galluci, City Manager
Josephine Triggs, City Clerk/Treasurer
Anthony Canzoneri, City Attorney
John H. Saunders, Assistant City Manager/Administrative Services
Vince Brar, Assistant City Manager/Public Works
Kathy Matsumoto, Deputy City Manager
Gregory R. Berg, Director of Community and Safety Services
Craig M. Springer, Theater Executive Director
Ali Soliman, Director of Community Development

Project Manager:

Torrey N. Contreras, Advance Planning/Redevelopment Manager

Consultants to the City:

RBF Consulting
Kimley-Horn and Associates
Agajanian & Associates
Laurin Associates

TABLE OF CONTENTS

Chapter 1:	Introduction	I-1
Chapter 2:	Land Use Element.....	LU-1
	1.0 Introduction	LU-1
	2.0 Authority for the Element.....	LU-1
	3.0 Summary of Existing Conditions	LU-2
	3.1 Summary of Existing Conditions	LU-2
	3.1.1 Residential.....	LU-2
	3.1.2 Commercial.....	LU-4
	3.1.3 Industrial	LU-5
	3.1.4 Parks and Recreation.....	LU-6
	3.1.5 Community Facilities	LU-6
	3.1.6 Vacant and Underutilized Land.....	LU-9
	3.2 Relationship to Other Plans	LU-13
	3.2.1 City's Zoning Ordinance	LU-14
	3.2.2 Area Development Plans.....	LU-14
	3.2.3 Redevelopment Plans	LU-25
	3.2.4 Development Agreements	LU-31
	3.3 Property Maintenance	LU-31
	4.0 Description of the Land Use Plan.....	LU-31
	4.1 Overview of the Land Use Plan.....	LU-31
	4.2 Land Use Designations	LU-32
	5.0 Planning Factors, Goals and Policies	LU-42
Chapter 3:	Community Design Element.....	CD-1
	1.0 Introduction	CD-1
	2.0 Authority for the Element.....	CD-1
	3.0 Summary of Existing Conditions	CD-2
	3.1 Community Image.....	CD-2
	3.1.1 Landmarks	CD-2
	3.1.2 Gateways	CD-3
	3.1.3 Freeway Corridors and Interchanges	CD-3
	3.1.4 Public Spaces	CD-3
	3.1.5 Public Art	CD-7
	3.1.6 Paths.....	CD-11
	3.1.7 Districts	CD-11
	3.1.8 Edges and Barriers	CD-12
	3.2 Streetscape – The Public Realm	CD-13
	3.2.1 Street Trees	CD-13
	3.2.2 Medians	CD-14
	3.2.3 Pedestrian Pathways	CD-15
	3.2.4 Street Furniture	CD-15
	3.2.5 Utilities	CD-16
	3.2.6 Private Residential Walls	CD-16

TABLE OF CONTENTS (CONTINUED)

Chapter 3:	Community Design Element - Continued	
	3.3 Private Development	CD-17
	3.3.1 Building Design	CD-17
	3.3.2 Site Planning	CD-18
	3.4 Signs.....	CD-18
	3.5 Vacant Parcels.....	CD-19
	4.0 Planning Factors, Goals and Policies	CD-21
Chapter 4:	Circulation Element.....	CIR-1
	1.0 Introduction	CIR-1
	2.0 Authority for the Element.....	CIR-2
	3.0 Summary of Existing Conditions	CIR-2
	3.1 Relationship to Other Plans	CIR-2
	3.2 Existing Conditions	CIR-5
	3.2.1 Regional Access.....	CIR-5
	3.2.2 Local Access	CIR-6
	3.2.3 Roadway Functional Classification System.....	CIR-6
	3.2.4 Public Transportation Services.....	CIR-7
	3.2.5 Bicycle and Pedestrian Facilities	CIR-11
	3.2.6 Truck Routes	CIR-12
	3.3 Analysis of Existing Operating Conditions.....	CIR-12
	3.3.1 Daily Traffic Conditions.....	CIR-12
	3.3.2 Peak Hour Traffic Conditions	CIR-18
	4.0 Description of the Circulation Plan	CIR-24
	4.1 Analysis of Buildout Traffic Conditions.....	CIR-24
	4.1.1 Methodology	CIR-25
	4.1.2 Buildout Traffic Projections.....	CIR-26
	4.1.3 Buildout Traffic Conditions on Roadways	CIR-26
	4.1.4 Buildout Traffic Conditions at Intersections	CIR-32
	4.2 Recommended Roadway Classifications	CIR-34
	4.2.1 Major Arterials.....	CIR-37
	4.2.2 Secondary Arterials.....	CIR-37
	4.2.3 Local Streets.....	CIR-38
	4.2.4 Recommended Roadway Cross-Sections	CIR-39
	5.0 Planning Factors, Goals and Policies	CIR-39
Chapter 5:	Housing Element.....	H-1
	1.0 Introduction.....	H-1
	1.1 Purpose.....	H-1
	1.2 Citizen Participation	H-2
	1.3 Housing Element Planning Cycle.....	H-2
	2.0 Authority for the Element	H-3
	3.0 Community Factors	H-3

TABLE OF CONTENTS (CONTINUED)

Chapter 5: Housing Element - Continued

	3.1 Demographic Characteristics.....	H-3
4.0	Description of the Housing Plan	H-5
	4.1 Quantified Objectives.....	H-5
5.0	Planning Factors, Goals and Policies	H-5
	5.1 Cerritos Housing Issues	H-5
	5.2 Goals and Policies	H-6
6.0	Housing Action Plan	H-8

Chapter 6: Safety Element..... SAF-1

1.0	Introduction	SAF-1
2.0	Authority for the Element.....	SAF-1
3.0	Summary of Existing Conditions	SAF-2
	3.1 City Plans and Programs	SAF-2
	3.2 Existing Conditions.....	SAF-5
	3.2.1 Natural Hazards	SAF-5
	3.2.2 Man-Made Hazards	SAF-19
	3.3 Crime, Fire and Medical Emergencies.....	SAF-23
	3.3.1 Fire Protection.....	SAF-23
	3.3.2 Police Protection	SAF-27
	3.4 Community Safety Division Services.....	SAF-29
	3.5 Aircraft Overflight	SAF-30
4.0	Planning Factors, Goals and Policies	SAF-31

Chapter 7: Conservation Element..... CON-1

1.0	Introduction	CON-1
2.0	Authority for the Element.....	CON-1
3.0	Summary of Existing Conditions	CON-2
	3.1 Water Resources.....	CON-2
	3.1.1 Water Supply and Sources	CON-2
	3.1.2 Local Groundwater	CON-2
	3.1.3 Surface Water	CON-3
	3.1.4 Recycled Water.....	CON-3
	3.2 Energy Resources	CON-7
	3.2.1 Electricity and Power.....	CON-7
	3.2.2 Natural Gas.....	CON-7
	3.3 Waste Management.....	CON-8
	3.3.1 Solid Waste	CON-8
	3.3.2 Stormwater Management.....	CON-8
	3.3.3 Household Hazardous Waste	CON-11
	3.3.4 Used Oil Collection.....	CON-11
	3.4 Biological Resources	CON-12
	3.5 Community Forest.....	CON-12
	3.6 Cultural and Historical Resources	CON-13
4.0	Planning Factors, Goals and Policies	CON-13

TABLE OF CONTENTS (CONTINUED)

Chapter 8:	Open Space/Recreation Element.....	OSR-1
1.0	Introduction.....	OSR-1
2.0	Authority for the Element.....	OSR-1
3.0	Summary of Existing Conditions.....	OSR-2
3.1	Existing Open Space and Recreational Facilities.....	OSR-2
3.1.1	Open Space for Outdoor Recreation.....	OSR-2
3.1.2	Open Space for “Day Residents”.....	OSR-2
3.1.3	Open Space for Public Health and Safety.....	OSR-7
3.1.4	Cerritos Recreational Facilities.....	OSR-7
3.1.5	Maintenance of Non-City Parks.....	OSR-7
3.1.6	Cerritos Recreational Programs.....	OSR-8
3.2	Other Open Space/Recreation Resources.....	OSR-12
3.2.1	Open Space Easements.....	OSR-12
3.2.2	Golf Course.....	OSR-12
3.2.3	Indoor and Outdoor Swim Facilities.....	OSR-12
3.2.4	Bikeways and Trailways.....	OSR-12
3.2.5	School Uses.....	OSR-15
4.0	Open Space and Recreation Plan.....	OSR-16
4.1	Parkland Standards.....	OSR-16
4.2	Parkland.....	OSR-20
4.3	Urban Open Space and Recreation Programs.....	OSR-21
4.4	Assessment of Recreation Facility Needs.....	OSR-21
4.5	Vacant Land for Parkland Development.....	OSR-21
4.6	Recreation Programming Needs.....	OSR-22
5.0	Planning Factors, Goals and Policies.....	OSR-22
 Chapter 9:	 Air Quality Element.....	 AQ-1
1.0	Introduction.....	AQ-1
2.0	Authority for the Element.....	AQ-1
3.0	Summary of Existing Conditions.....	AQ-1
3.1	Climate.....	AQ-1
3.2	Regulatory Framework.....	AQ-3
3.2.1	Federal Clean Air Act.....	AQ-3
3.2.2	California Clean Air Act.....	AQ-3
3.2.3	South Coast Air Quality Management District.....	AQ-5
3.3	Ambient Air Quality Standards.....	AQ-6
3.4	Local Ambient Air Quality.....	AQ-8
3.5	Sensitive Receptors.....	AQ-8
3.6	Toxic Air Contaminants (TACs).....	AQ-9
4.0	Planning Factors, Goals and Policies.....	AQ-9
 Chapter 10:	 Noise Element.....	 N-1
1.0	Introduction.....	N-1

TABLE OF CONTENTS (CONTINUED)

Chapter 10: Noise Element - Continued		
2.0	Authority for the Element.....	N-1
3.0	Summary of Existing Conditions	N-2
3.1	Noise Scales and Definitions	N-2
3.1.1	Community Noise Equivalent Level (CNEL).....	N-2
3.1.2	Leq.....	N-4
3.1.3	Day Night Average.....	N-4
3.1.4	Other Noise Matrices	N-4
3.2	Noise Standards.....	N-5
3.2.1	Federal Noise Standards.....	N-5
3.2.2	State Noise Standards	N-5
3.2.3	City Noise Standards.....	N-8
3.3	Existing Noise Conditions	N-9
3.3.1	Traffic Noise	N-9
3.3.2	Stationary Noise Sources	N-9
3.3.3	Other Stationary Noise Sources	N-9
4.0	Noise Contours	N-19
5.0	Description of Noise Plan.....	N-20
6.0	Planning Factors, Goals and Policies	N-22
 Chapter 11: Growth Management Element.....		 GM-1
1.0	Introduction	GM-1
2.0	Authority for the Element.....	GM-1
3.0	Summary of Existing Conditions	GM-1
3.1	Public Facilities and Services.....	GM-1
3.1.1	Water and Sewer Facilities and Services	GM-1
3.1.2	Storm Drainage Facilities and Services	GM-1
3.1.3	Solid Waste Facilities and Services	GM-2
3.1.4	Emergency Services	GM-2
3.1.5	Community/Civic/Educational/Cultural Facilities.....	GM-2
3.2	Fiscal Resources	GM-2
3.2.1	Factors Affecting Fiscal Sustainability.....	GM-2
3.2.2	Municipal Cost Profile.....	GM-3
4.0	Planning Factors, Goals and Policies	GM-6
 Chapter 12: General Plan Glossary.....		 G-1
1.0	Abbreviations.....	G-1
2.0	Terms and Definitions.....	G-2
 Chapter 13: Implementation.....		 IMP-1

TABLE OF CONTENTS (CONTINUED)

Appendices (Separate Volume)

- Appendix A: Existing and Buildout Land Use Projections
- Appendix B: Traffic Analysis
- Appendix C: Air Quality Model Runs
- Appendix D: Noise Model Runs
- Appendix E: Notice of Preparation (NOP) and NOP Responses
- Appendix F: Correspondence
- Appendix G: Fiscal Sustainability Study
- Appendix H: Housing Element

LIST OF EXHIBITS

I-1	Regional Location Map.....	I-2
I-2	Aerial Photograph.....	I-4
LU-1	Vacant and Underutilized Land (August 2001)	LU-11
LU-2	Area Development Plans.....	LU-17
LU-3	Redevelopment Project Areas.....	LU-27
LU-4	General Plan Land Use Map.....	LU-53
CD-1	Landmarks	CD-5
CD-2	Districts, Paths, Edges, and Gateways.....	CD-6
CD-3	Public Art	CD-9
CD-4	Conceptual Site Plan for Vacant Parcels.....	CD-20
CIR-1	Functional Roadway Classifications (1988 General Plan).....	CIR-9
CIR-2	Public Transportation Services.....	CIR-13
CIR-3	Truck Routes	CIR-15
CIR-4	2001 Daily Roadway Segment Traffic Volumes	CIR-19
CIR-5	Buildout (2020) Daily Roadway Segment Traffic Volumes	CIR-27
CIR-6	Recommended Roadway and Intersection Improvements.....	CIR-35
CIR-7	Functional Roadway Classifications (2002 General Plan).....	CIR-41
CIR-8	Recommended Typical Sections for Arterials	CIR-43
SAF-1	Emergency Evacuation Routes.....	SAF-3
SAF-2	Geologic Conditions	SAF-7
SAF-3	Regional Fault Map	SAF-9
SAF-4	Potential Liquefaction Areas.....	CIR-11
SAF-5	Dam Inundation Areas.....	SAF-17

LIST OF EXHIBITS (CONTINUED)

SAF-6	Potentially Hazardous Pipelines	SAF-21
SAF-7	Fire Stations In Cerritos.....	SAF-25
CON-1	Water Sources	CON-5
OSR-1	Open Space and Recreation Facilities	OSR-5
OSR-2	Open Space for Public Health and Safety.....	OSR-9
OSR-3	Bikeways and Trailways Map.....	OSR-13
OSR-4	School Facilities.....	OSR-17
N-1	Existing Noise Contours.....	N-11
N-2	Noise Sensitive Land Uses	N-15
N-3	2020 Noise Contours	N-25

LIST OF TABLES

LU-1	Existing Land Use.....	LU-3
LU-2	Summary of Vacant and Underutilized Land.....	LU-9
LU-3	Area Development Plan Summary.....	LU-15
LU-4	General Plan Land Use in 2020.....	LU-32
LU-5	Land Use Designations and Density/Intensity Standards.....	LU-34
LU-6	Relationship of General Plan Land Use Designations with Zoning.....	LU-41
CIR-1	1988 General Plan Functional Roadway Classifications.....	CIR-11
CIR-2	Daily Roadway Capacity by Roadway Type.....	CIR-17
CIR-3	Level of Service Descriptions.....	CIR-17
CIR-4	Level of Service on Roadway Segments, Existing Conditions.....	CIR-21
CIR-5	Intersection Level of Service and Corresponding ICU Values.....	CIR-24
CIR-6	Intersection Analysis – 2001 Conditions.....	CIR-25
CIR-7	Level of Service on Roadway Segments, Buildout Conditions (2020).....	CIR-29
CIR-8	Intersection Levels of Service at Buildout (2020).....	CIR-33
CIR-9	Summary of Buildout (2020) Intersection Operation After Mitigation.....	CIR-34
CIR-10	Functional Roadway Classifications.....	CIR-39
HOU-1	Quantified Objectives Summary (1998-2005).....	H-5
SAF-1	Fire Stations Serving Cerritos.....	SAF-27
SAF-2	Sheriff’s Department Response Times.....	SAF-28
CON-1	Existing Groundwater Resources.....	CON-3
OSR-1	City of Cerritos Park and Recreation Inventory.....	OSR-3
OSR-2	Parks Maintained by City of Cerritos.....	OSR-7
OSR-3	School Facilities in Cerritos.....	OSR-15

LIST OF TABLES (CONTINUED)

OSR-4 City of Cerritos Park Development Guidelines OSR-20

OSR-5 Existing Parkland Acreages vs. Quimby Act Requirements OSR-20

AQ-1 Local Air Quality Levels AQ-4

N-1 Sound Levels and Human Response N-3

N-2 Cerritos Noise Standards By Use N-6

N-3 Noise and Land Use Compatibility Matrix..... N-6

N-4 State Interior and Exterior Noise Standards..... N-7

N-5 Field Noise Measurements.....N-17